

WINDSOR



10895 SAVANNAH DRIVE, NO 205



10895 SAVANNAH DRIVE, NO. 205

This expansive five-bedroom residence located on the second floor of Windsor Park Residences features three exposures with sunset views sweeping across the lush conservation area. With 10'-foot ceilings, the light-filled and elegantly crafted interiors are finished with refined details including custom window and wall coverings, 8'-tall interior doors, and 7"-wide plank engineered oak flooring throughout all living areas. Covered porches off the great room, and two of the guest suites allow for seamless indoor-outdoor living. Offering the convenience of turnkey living, this residence features a flexible floor plan ideal for live and work arrangements.

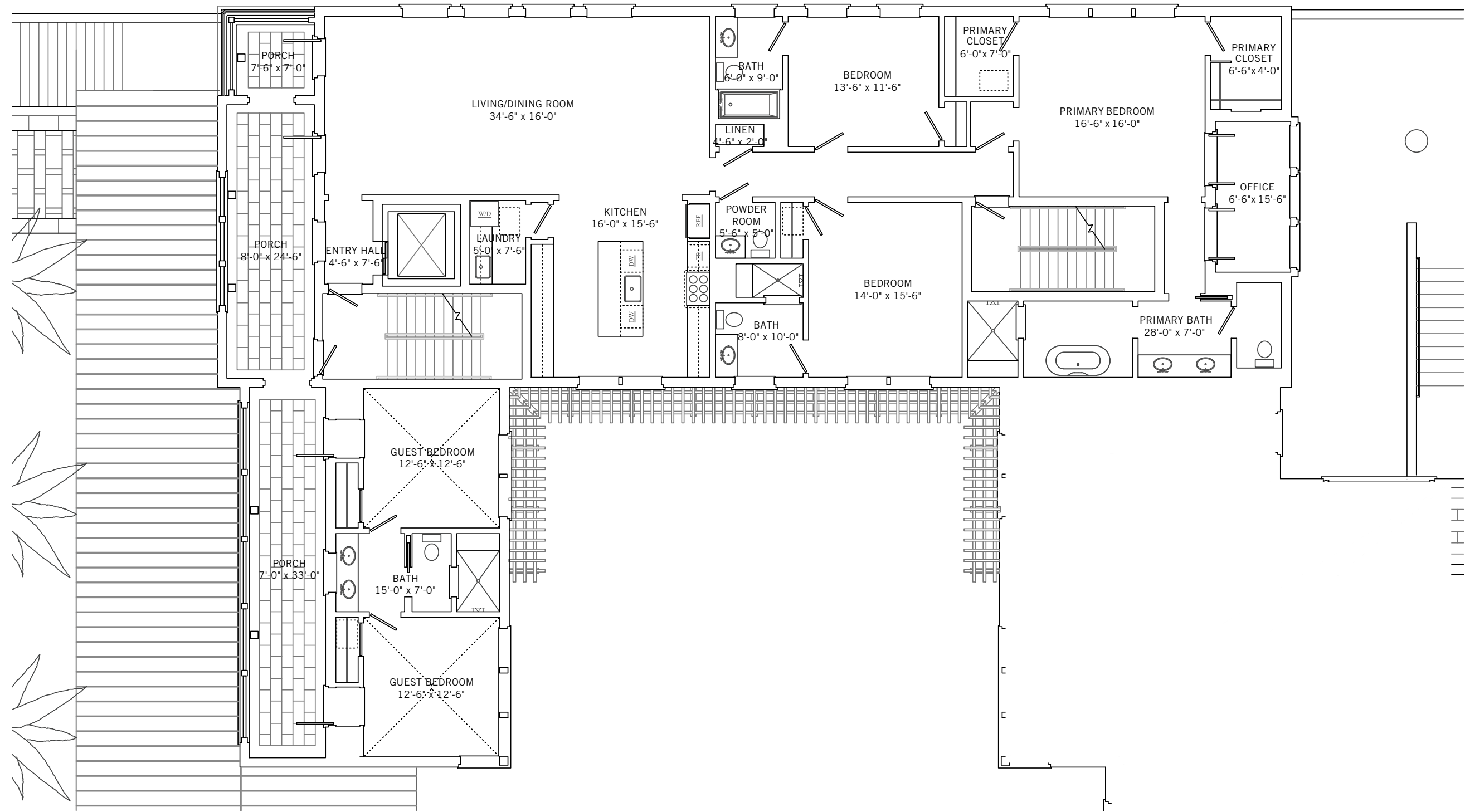
BEDROOMS	5
BATHROOMS	4 FULL, 1 HALF
A/C SPACE	3,135 SQ FT
NON-A/C SPACE	549 SQ FT
ADJUSTED SPACE*	3,410 SQ FT
LOT TYPE	WINDSOR PARK RESIDENCES
LOT SIZE	N/A
LOCATION	NO. 205
ARCHITECT	MERRILL, PASTOR, & COLGAN
BUILDER	HURYN CONSTRUCTION
YEAR BUILT	2018

*Adjusted Space equals A/C space plus 50% of non-A/C space

WINDSOR PARK RESIDENCES

Located on the western edge of the community, the Windsor Park Residences feature a collection of 12 residences within five connected three-story buildings with central gardens and a beautiful private reflecting pool courtyard as its centerpiece. The serene central gardens serve as a formal entrance for all the residences, as well as an extension of the park directly across the street to the east. Each residence includes balconies and porches for the best of Florida indoor and outdoor living. Each residence is provided with a ground-level climate-controlled storage room and dedicated space for two cars and one golf cart.





These drawings, colors and floor plans are conceptual only and are for the convenience of reference. They should not be relied upon as representation, express or implied, of final detail. The developer expressly reserves the right to make modifications, revisions and changes which it deems desirable in its sole and absolute discretion.





LIVING & ENTERTAINING

Spacious and filled with natural light, this residence has been designed in every detail to offer sophisticated single-floor living. The great room enjoys dramatic sunset views over the conservation area and opens to a covered porch with views of the central courtyard and reflecting pool. The porch is generously sized for outdoor dining and lounging in South Florida's marvelous climate. The bright contemporary kitchen with premium appliances, separate from yet open to the dining area, and adjacent to a laundry room, receives beautiful eastern light from tall windows.



PRIVATE SUITES

The elegant primary suite in this residence features a private north-facing office accessed via French doors. This suite has been thoughtfully designed to offer a spa-inspired bathroom and two walk-in closets. The main residence offers two guest suites, each with en-suite bathroom. The unique layout of this residence provides two additional guest suites that are each accessed via outside entrances on a private covered porch. These suites feature dramatic vaulted ceilings and a shared bathroom.





DESIGN DETAILS & FINISHES

PROPERTY & ARCHITECTURE

- One of just 12 Windsor Park Residences
- Located on the second floor
- Private elevator access
- Five bedrooms, four full bathrooms and one powder room
- Cypress tongue-and-groove ceilings
- Dominican shell stone flooring on expansive covered porches
- Garage space for two cars and one golf cart
- Air-conditioned storage room

VIEWS

- Sunset views over conservation area
- Courtyard garden and reflecting pool

INTERIOR HIGHLIGHTS

- Custom window treatments and wall coverings
- Designer light fixtures throughout
- 7" engineered oak flooring throughout all living areas and bedrooms

INTERIOR HIGHLIGHTS (CONTINUED)

- Corner great room with living and dining areas features nearly full-height picture windows and opens to a covered porch
- Kitchen with pendant lighting, Wood Mode cabinetry, center eat-in island and Quartzite countertops
- Appliances by Wolf, Sub-Zero and Miele

PRIMARY SUITE

- Bedroom with western exposure
- French doors open to a north-facing enclosed office
- Two walk-in closets
- Spa-inspired bathroom with Calacatta Gold marble-top double vanity, walk-in shower with frameless glass door, freestanding soaking bathtub, and natural stone flooring

GUEST SUITES

- Two guest suites with en-suite bathrooms
- Two guest suites accessed from the outside via a covered porch each feature a vaulted ceiling and access to a shared bathroom

A VILLAGE BY THE SEA

Located in Vero Beach along Florida's Treasure Coast, Windsor is a private residential community and sporting club with a uniquely enchanting lifestyle. Across 472 lush acres, nestled between the Atlantic Ocean and the Indian River, Members and guests enjoy a host of exclusive amenities, including beach and golf clubs, a links-style golf course, tennis and equestrian centers and fine and casual dining restaurants.



AMENITIES

1. VILLAGE CENTRE
2. FITNESS & WELLNESS CENTRE
3. TOWN HALL
4. EQUESTRIAN CENTRE
5. BEACH CLUB
6. POLO FIELD
7. CROQUET GREENSWARD
8. TENNIS CENTRE
9. CLUBHOUSE
10. THE GALLERY



10680 BELVEDERE SQUARE VERO BEACH FLORIDA 32963
TEL 772 388 8400 WINDSORFLORIDA.COM